

# Lovay Fine Arts

Ligia Dias

Lives and works in Geneva

Since almost 20 years Ligia Dias has been developing her own practice within art, design and fashion, working in parallel for international luxury fashion brands and renowned artistic directors. Her work explores the intimate relationship between these fields of creation, the analysis of the role of objects, and of the auteur as producer.

Dias creates functional and non-functional objects mixing standard materials from hardware and jewellery stores, leftovers of her production as well as found objects. The use of discarded, recycled or found matters is an opposition to the overproduction of objects. Especially coming from an industry known to be wasteful, she no longer buys raw materials until the stock that served her former productions is exhausted and recycled in her newest creations. In her process she also adopts various craft techniques which she does not seek to master, and gives equivalency to materials considered precious or non-precious.

Appropriation and transmission are at the core of her practice and most works feature a tribute to other artists, designers, or friends. One of her main inspirations comes from her encounter with the Anni Albers and Alexander Reed necklaces from the 1940s, in particular the one composed of washers and grosgrain ribbon. That influence is the starting point of her jewelry work (ANNI, 2005), as well as her artistic practice — in LA1(2021), she has replaced the leather seat of the MR10 chair by Mies van der Rohe with the same strands of washers and ribbon, a gesture that cancels its functional property. That is one of the many aesthetic crossovers Dias makes after mentors such as William Morris, Nancy Holt and Mike Kelley. All the works are titled accordingly, like an archival system.

Since 2017 Dias is curating the project THE CORNER PIECE that brings together conceptual and craft practices, questioning the notion of artistic field and the subjective value of a given object, be it an artwork or a product, as well as the exhibition form in itself. The project has been staged at Independent Art Fair in Brussels (2017), with the gallery Martina Simeti at Design Miami in Miami (2018), at Galleria Francisco Fino in Lisbon (2019), and Gallery Complete Works in Geneva (2019).

Lovay Fine Arts has given Ligia Dias carte blanche to intervene in the group exhibition Never-Nevermore as her practice encapsulates a proposal of repetition, appropriation, fetish and the copy.

## **Selected exhibitions**

Musée des arts décoratifs, Paris; Musée d'art moderne de la ville de Paris, Paris; Musée des Beaux-arts, Lausanne; Bally Foundation, Lugano, among others.

## **Public Collections**

Swiss Federal Art Collection hosted at the mudac in Lausanne; Centre national des arts plastiques, Paris; FRAC Normandie, Caen.

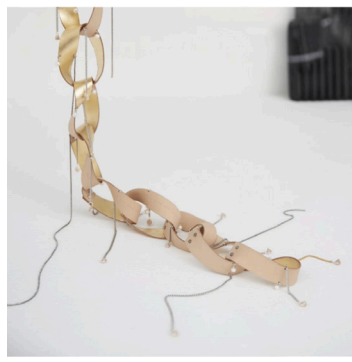
## **Education**

2000-2002 BA in Fashion design, Studio Berçot, Paris FR

1994-2000 BA HES-SO in Graphic design, ECAL, Lausanne CH



**After MAX 3, 2018**  
Leather, anodized aluminium, brass,  
Max Bill ULM stool in spruce and beech  
44 x 39, 5 x 29, 5 cm



**DO, 2022**  
Leather, 23.75 carats gold leaf, freshwater  
pearls, shells, brass, steel  
220 x 10 cm



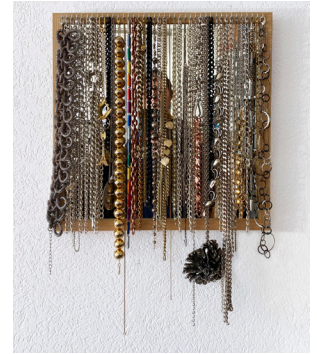
**After MAX 2, 2018**  
Leather, anodized aluminium, brass,  
Max Bill ULM stool in spruce and beech  
44 x 39, 5 x 29, 5 cm



**LAI, 2021**  
MR10 Mies van der Rohe chair, 23.75 carats  
gold leaf, stainless steel, polyester  
77 x 49 x 70 cm



**PAIRE DE MIROIRS, 2023**  
Mirror, glass, 23.75 carats gold leaf, brass  
edition of 8  
33 x 15 cm (15 cm each)



**MIKE (Memory Ware) 3, 2024**  
Mirror, wood, found objects  
63 x 43 cm



**Spectacles 3, 2023**  
Found aluminium framed mirror,  
LV spectacle lenses  
60,5 x 49,5 cm



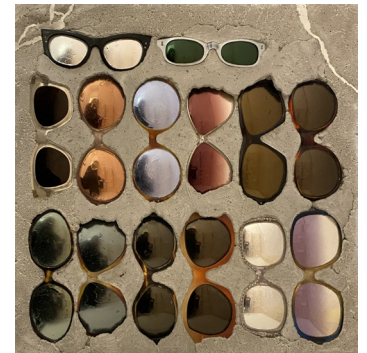
**ARNAUD (vide-poche), 2020**  
Discarded leather, found objects, CHANEL nail  
polish, gold leaf,  
metal, cork, glass, brass, USM Haller structure  
155 x 217 cm



**MIKE (Memory Ware) 2, 2022**  
Glass, 23.75 carats gold leaf, wood,  
artist's own vintage costume jewelry  
103 x 33 cm



**NANCY (concrete poetry), 2023**  
Found mirror, new mirror, concrete, crystal  
27 x 21,5 cm



**NANCY (la société du spectacle) 2, 2023**  
Vintage sunglasses, silver leaf, concrete,  
wood  
40 x 41 cm